

South Africa's national land and ecosystem asset accounts: *Your questions answered*

CoT
Depopu
Inc popu
Nexus stuff

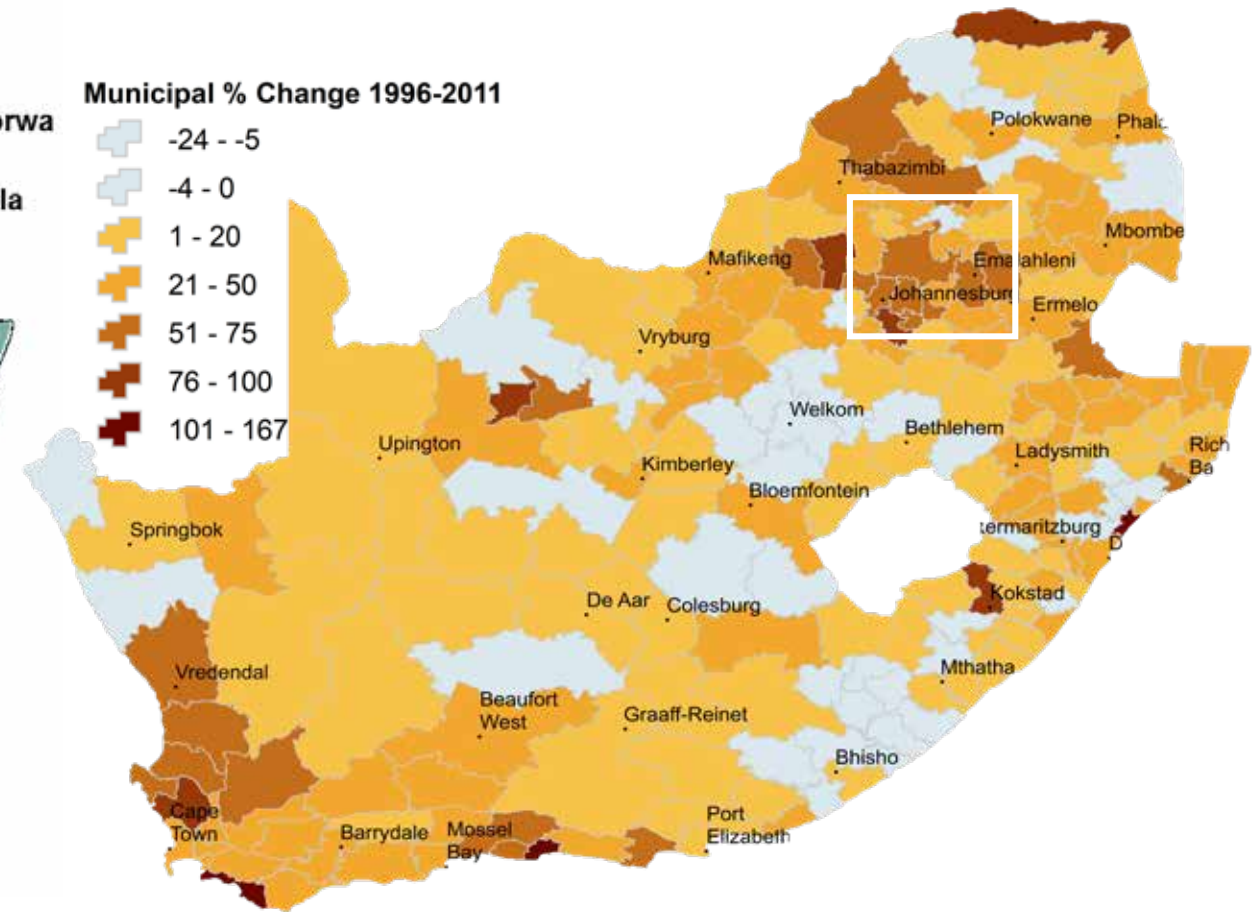
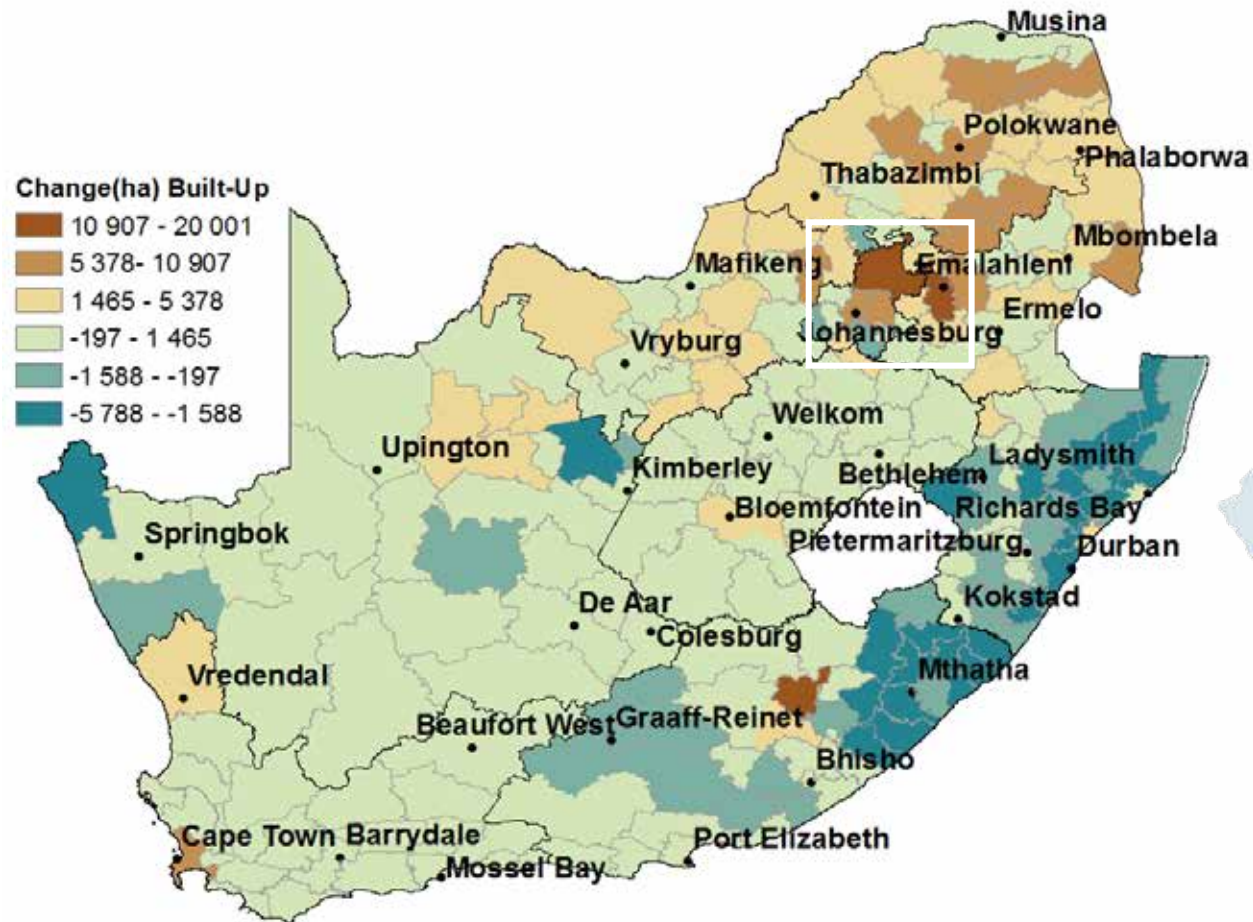


QUESTIONS

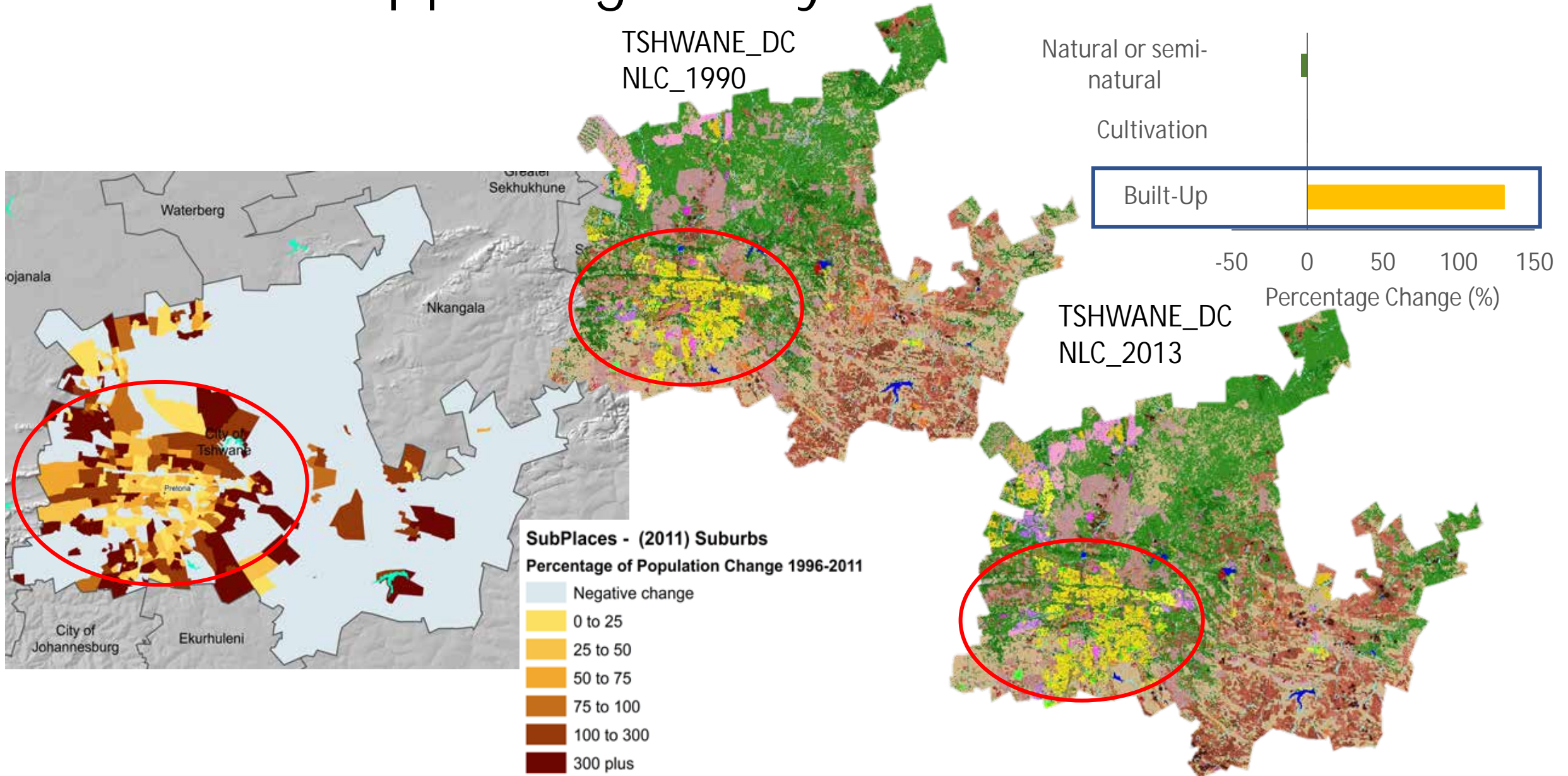


Case study 1 - City of Tshwane

What is happening in City of Tshwane?

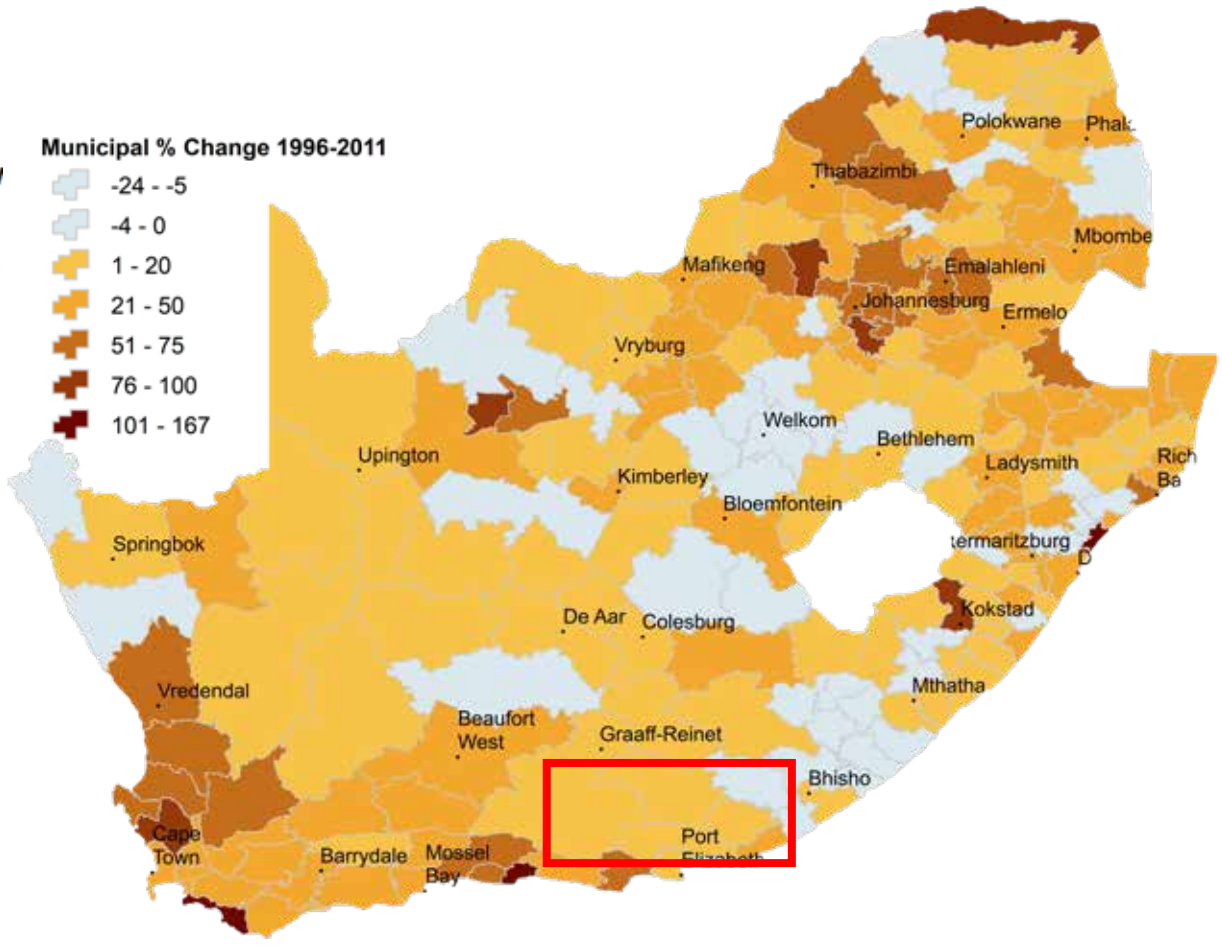
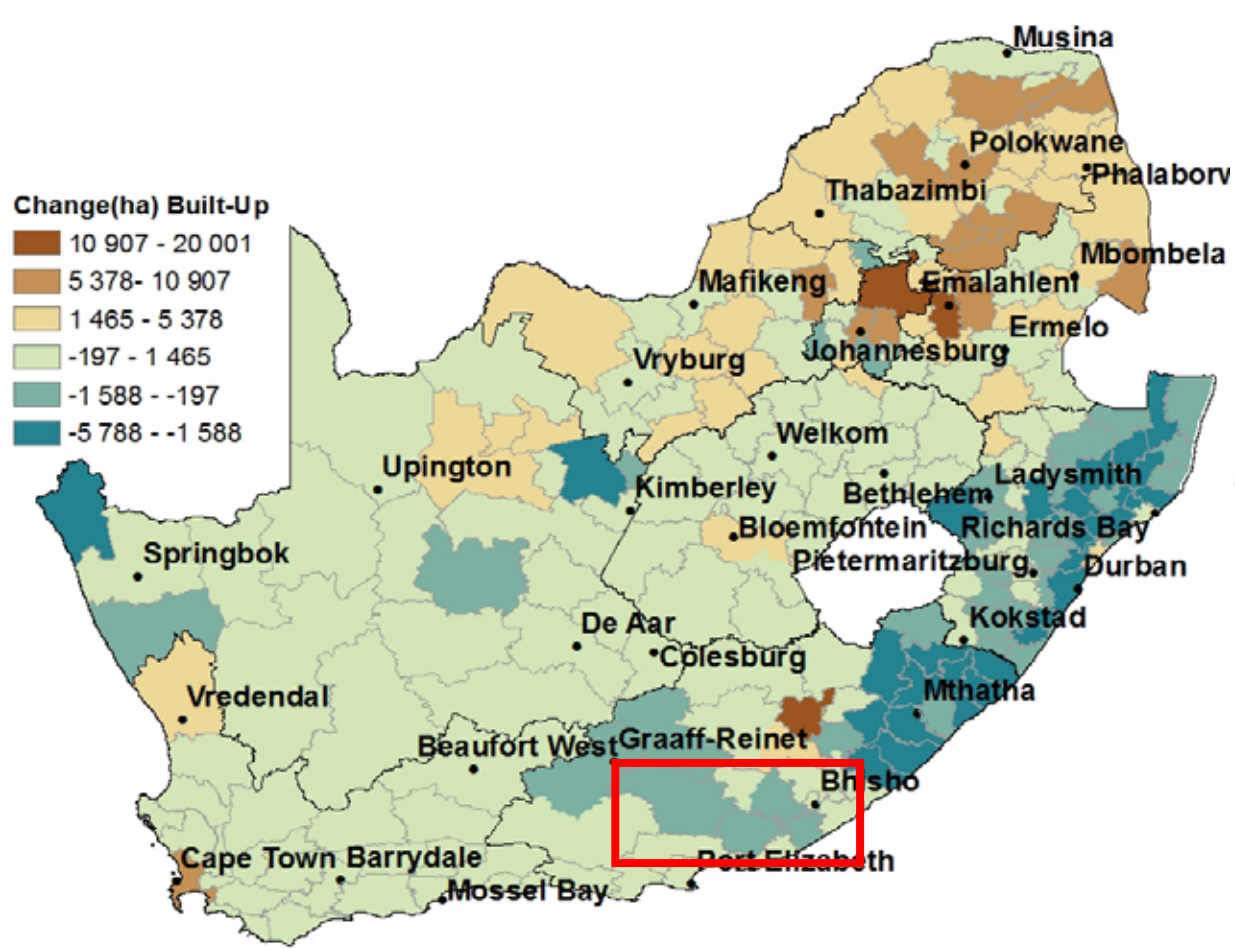


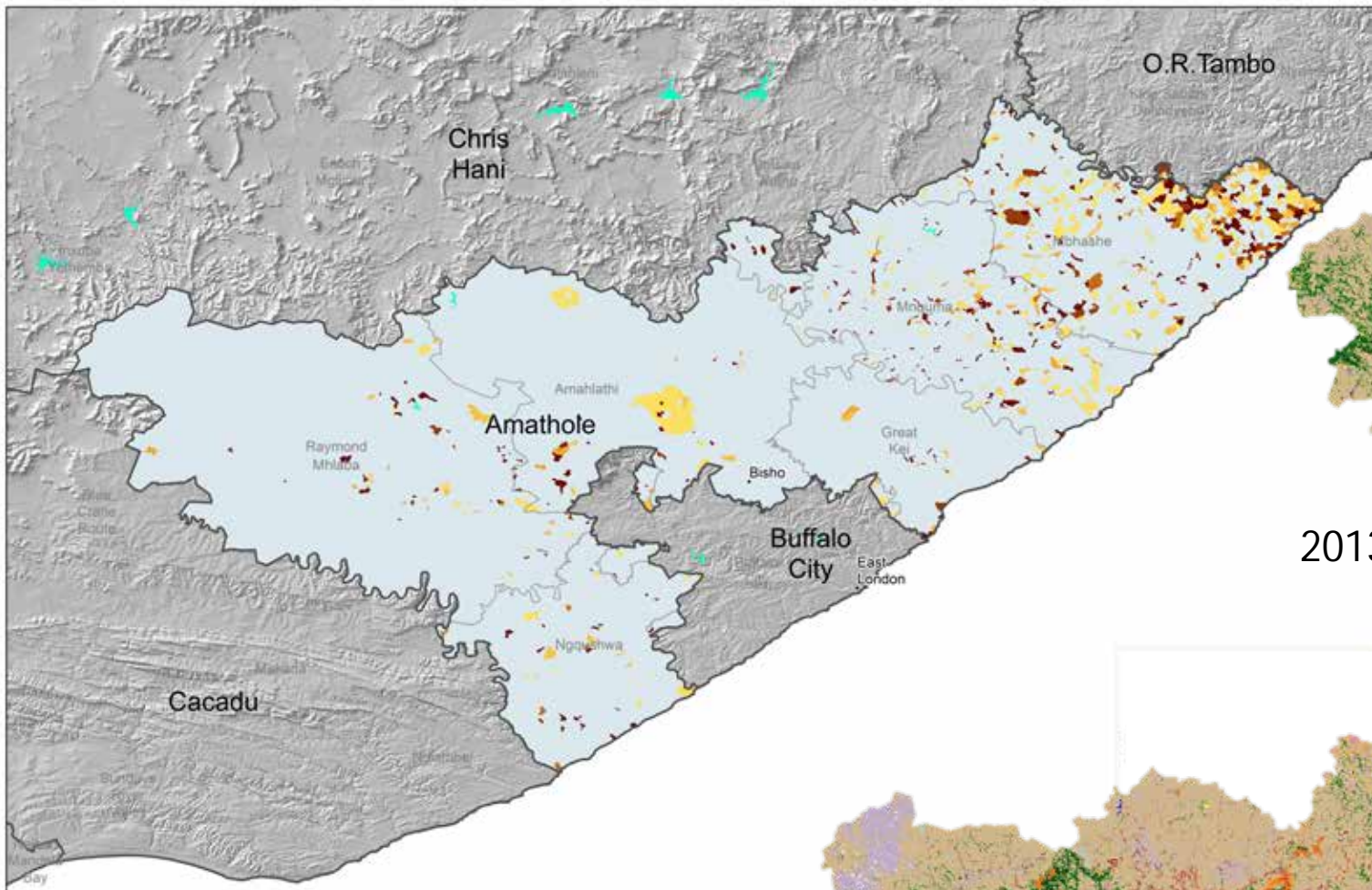
What is happening in City of Tshwane?



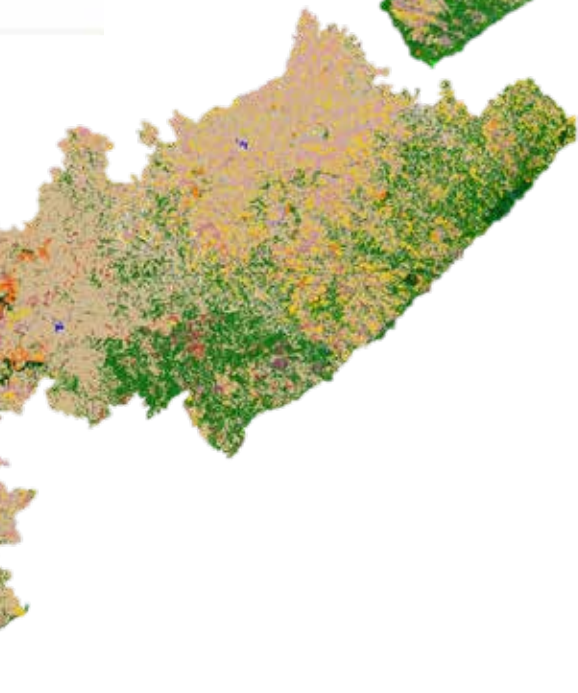
Case study 2 - Amathole

Where is population decreasing and what is happening in the environment?





2013/14



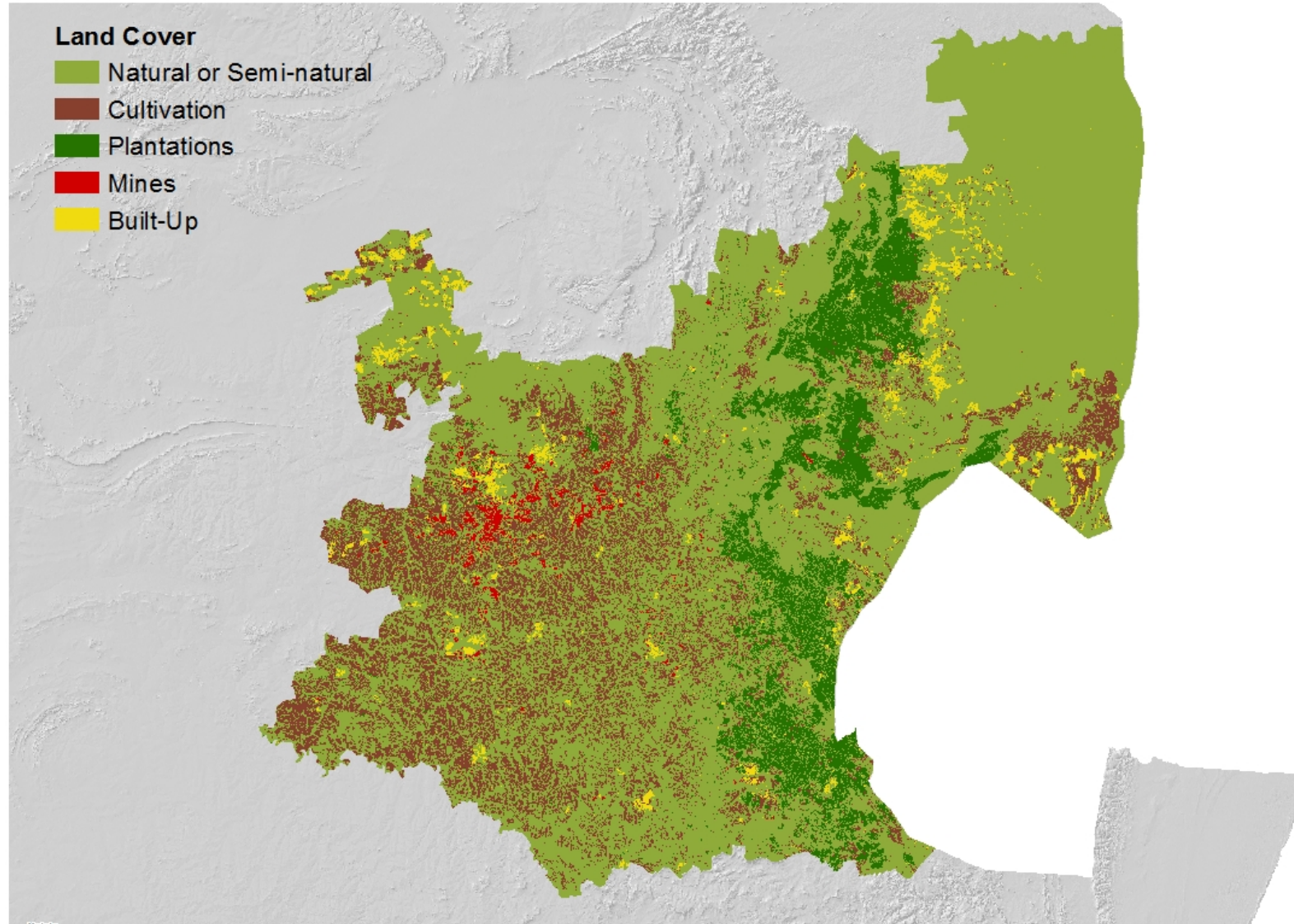
1990

Percentage of Population Change 1996-2011

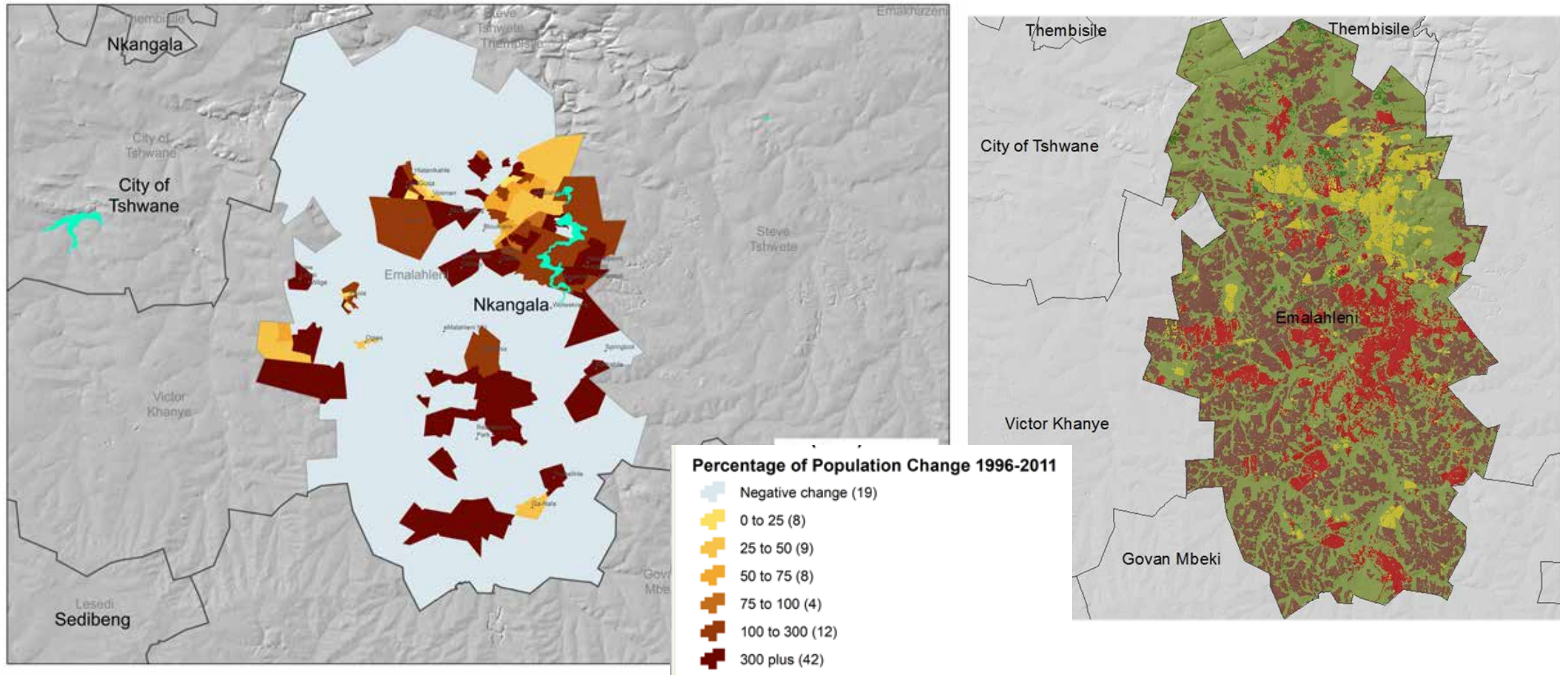
- Negative change
- 0 to 25
- 25 to 50
- 50 to 75
- 75 to 100
- 100 to 300
- 300 plus

Case study 3 -Mpumalanga

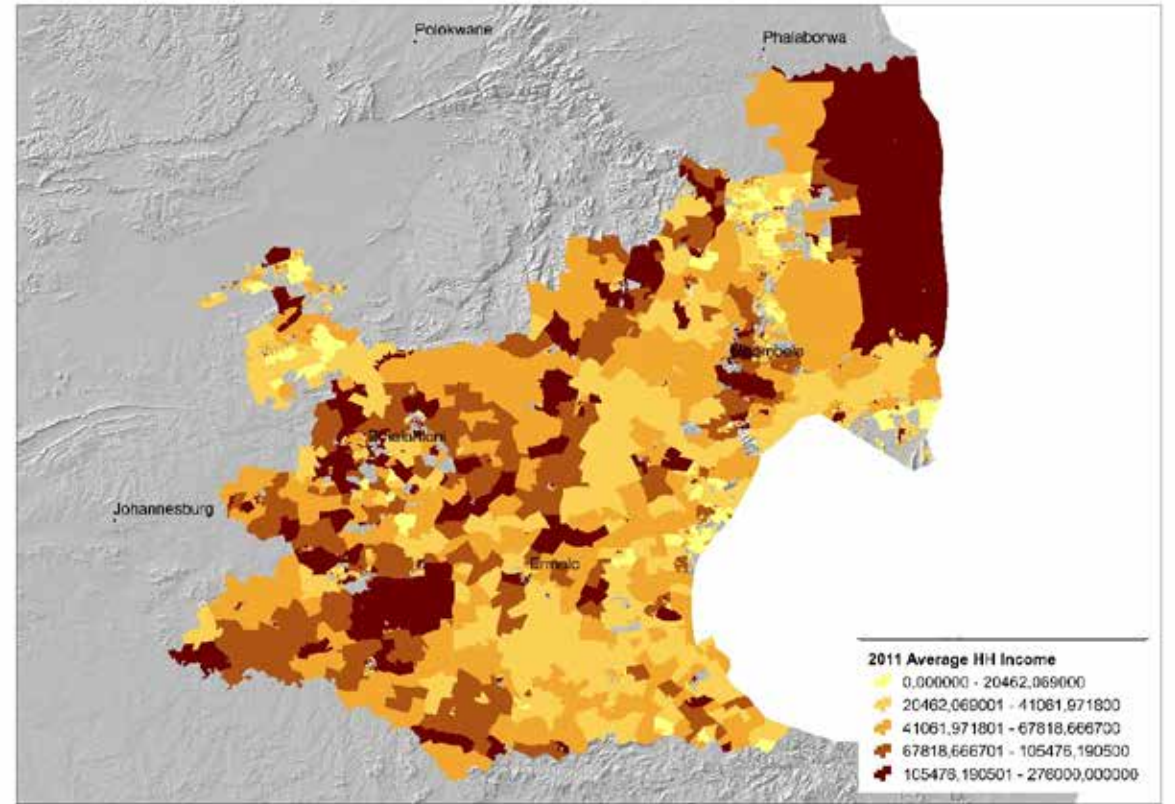
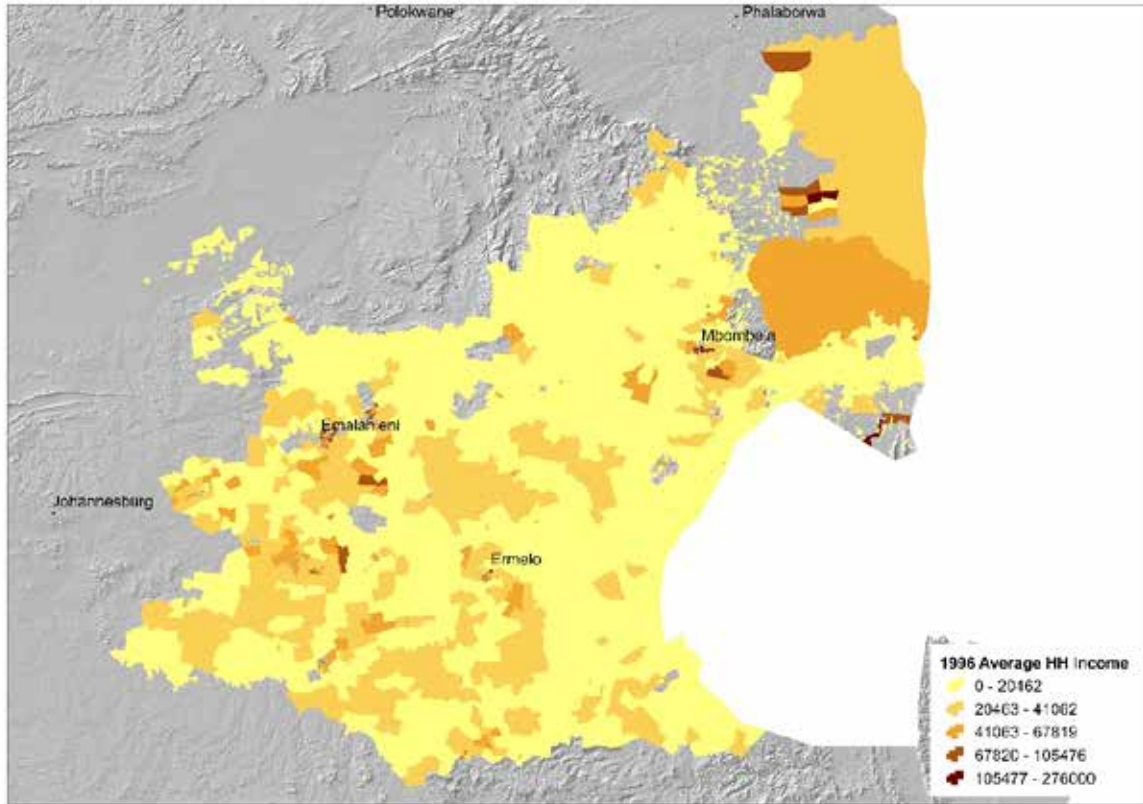
What does change in Mpumalanga tell us?



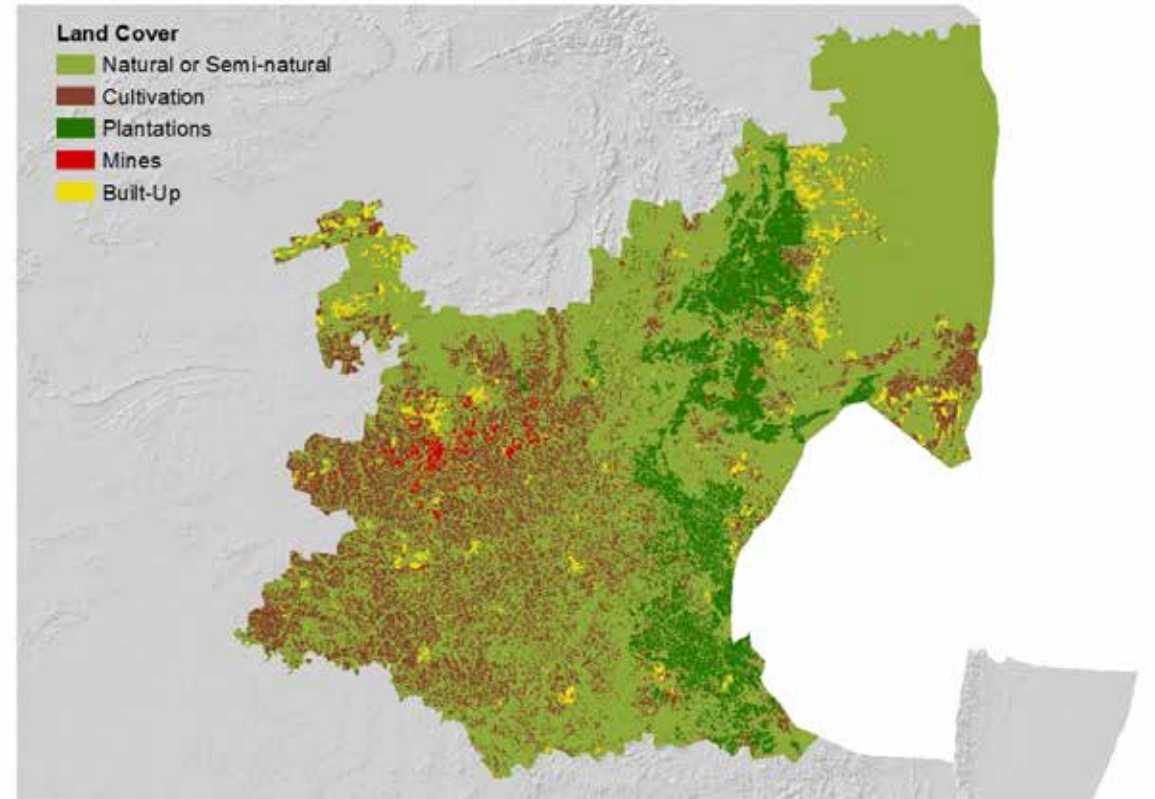
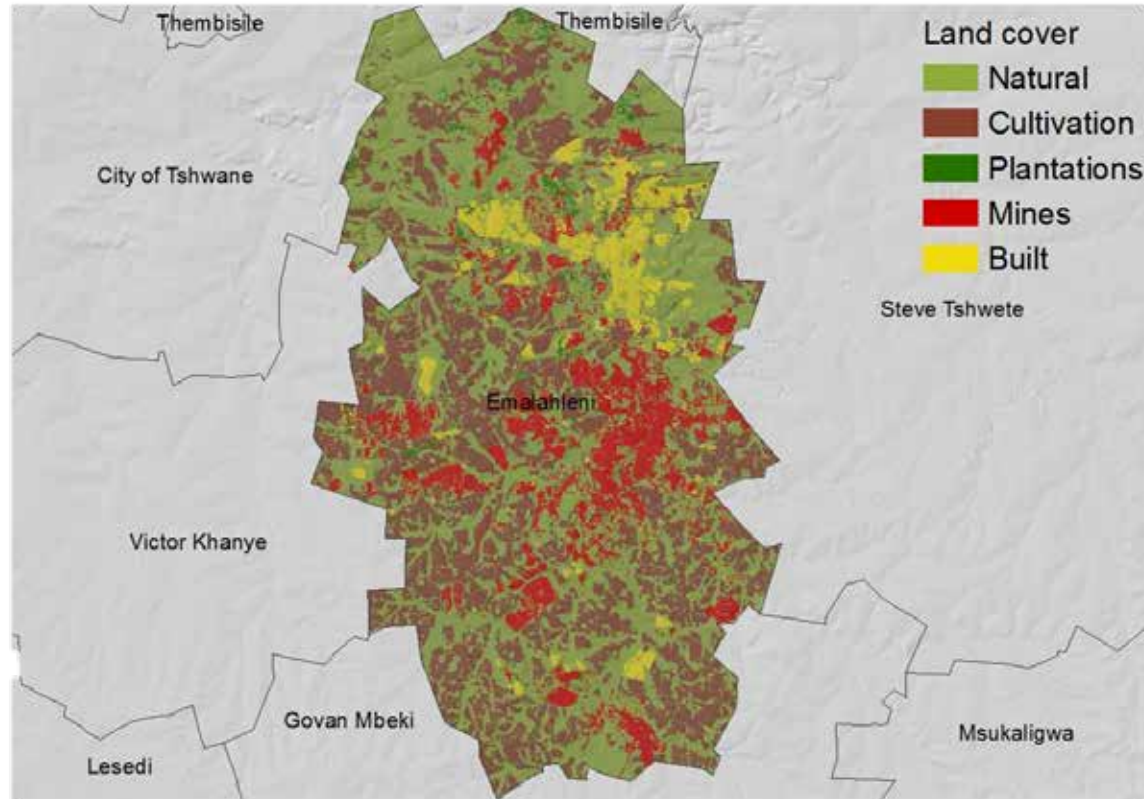
What does change in Emalahleni LM tell us?



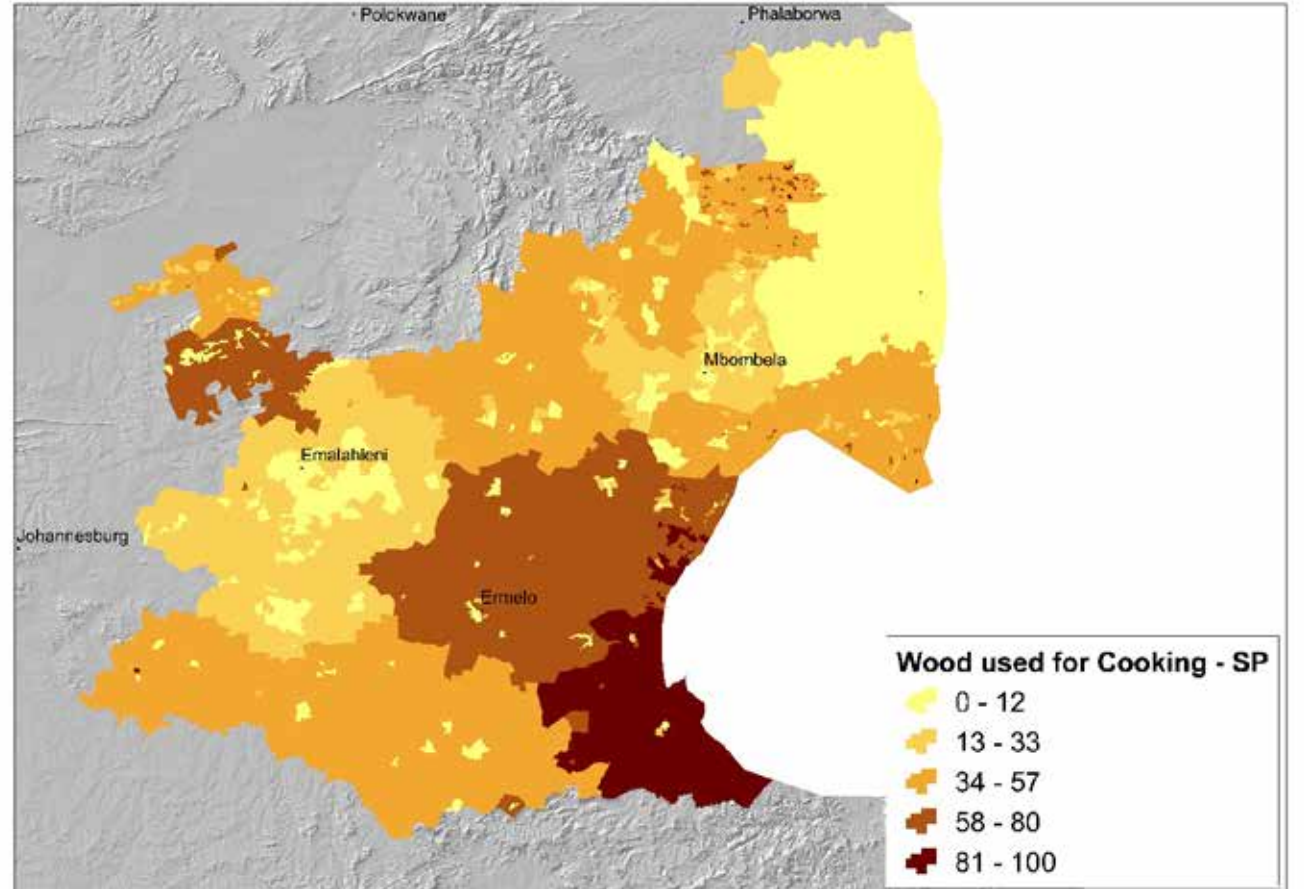
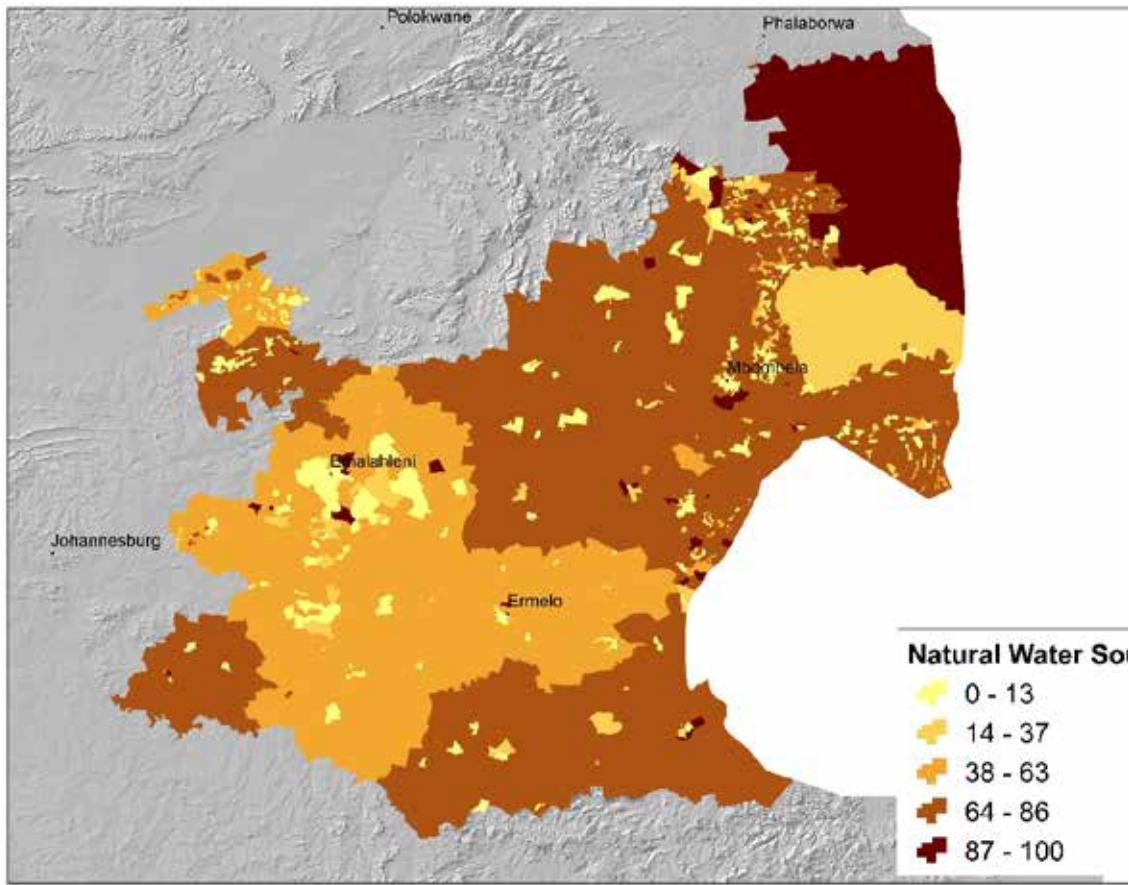
Mpumalanga



What else is it telling us?



Mpumumalanga – reliance on environment



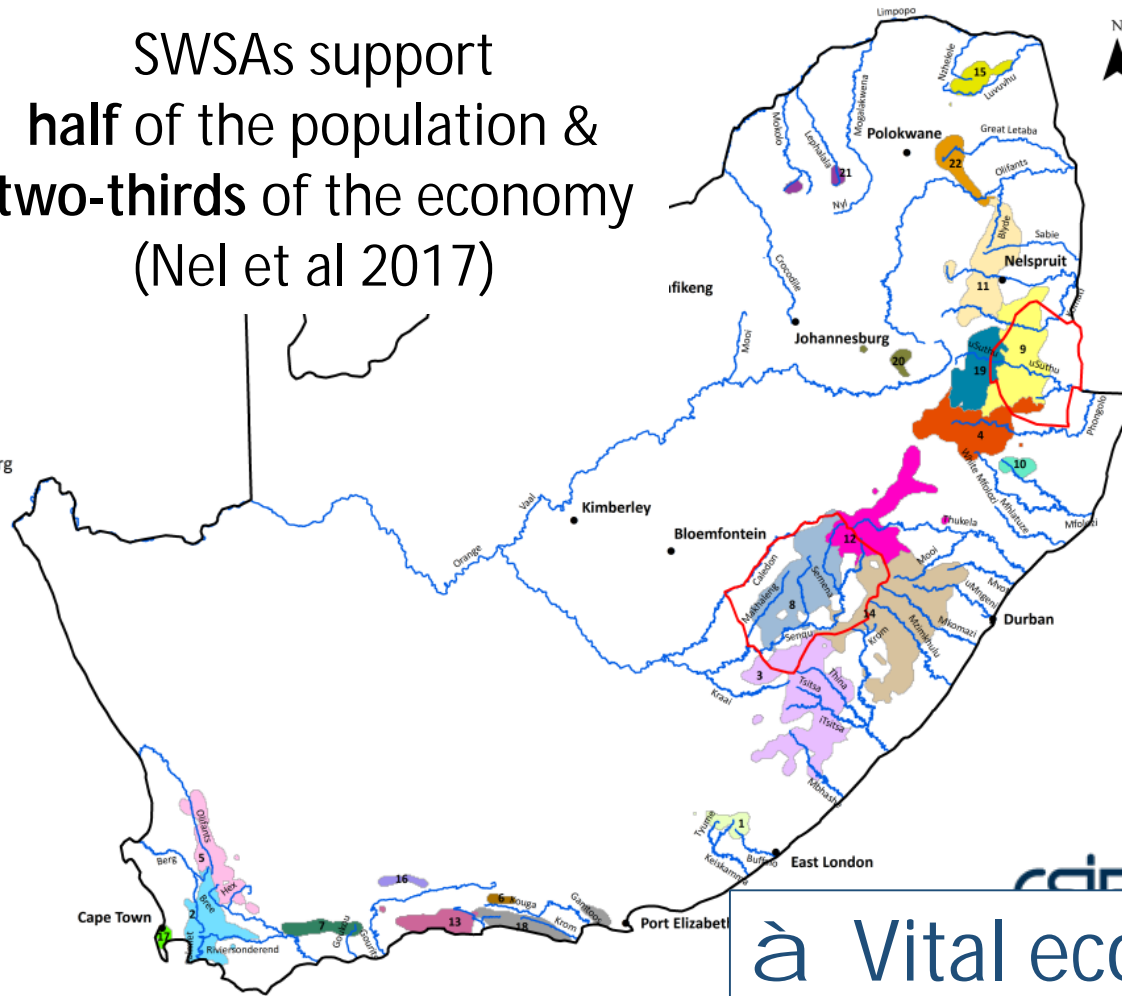
Strategic Water Source Areas

SWSAs support
half of the population &
two-thirds of the economy
(Nel et al 2017)

10% of South Africa's
land area delivers
50% of surface water

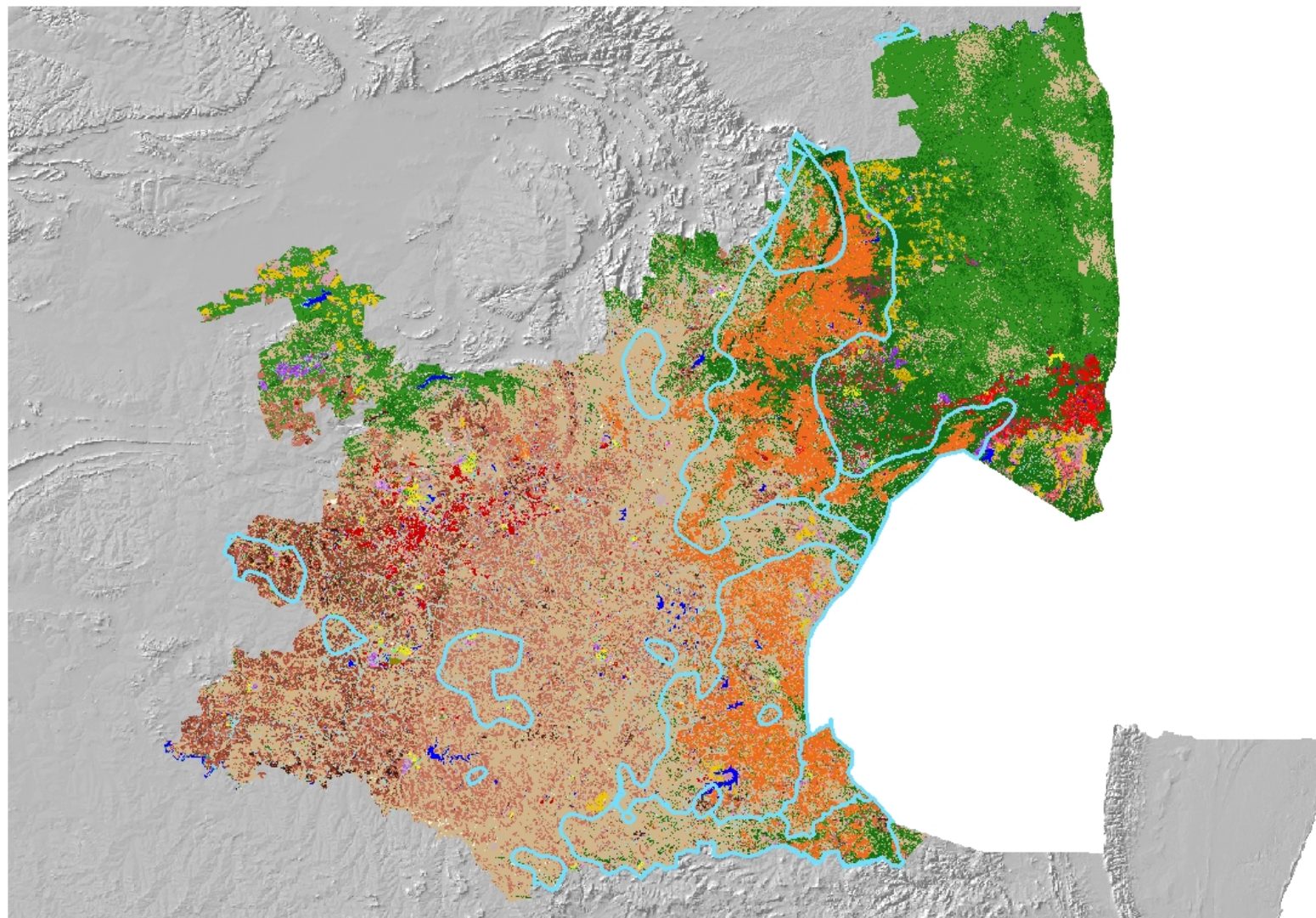
Strategic water source area:

- 1: Amatole
- 2: Boland
- 3: Eastern Cape Drakens
- 4: Enkangala Drakensbe
- 5: Groot Winterhoek
- 6: Kouga
- 7: Langeberg
- 8: Maloti Drakensberg
- 9: Mbabane Hills
- 10: Mfolozi Headwaters
- 11: Mpumalanga Drakensberg
- 12: Northern Drakensberg
- 13: Outeniqua
- 14: Southern Drakensberg
- 15: Soutpansberg
- 16: Swartberg
- 17: Table Mountain
- 18: Tsitsikamma
- 19: Upper Usutu
- 20: Upper Vaal
- 21: Waterberg
- 22: Wolkberg
- Lesotho and Swaziland
- 1: 500 000 Rivers
- Towns



à Vital ecological infrastructure

Strategic Water Source Areas



Closing statements

- NCA allows for
 - interrogating across sectors
 - Monitoring across land, water and marine ecosystems
- Because the data is all spatial, we can integrate the diff types of data
- It is clear how good time series data of population, economy and environment is important to monitoring
- NCA provides us with huge potential to **answer questions and interrogate assumptions** about how economic links with environment and society.
- In this way, NCA supports South Africa's ability to make evidence-based decisions.

THANK YOU